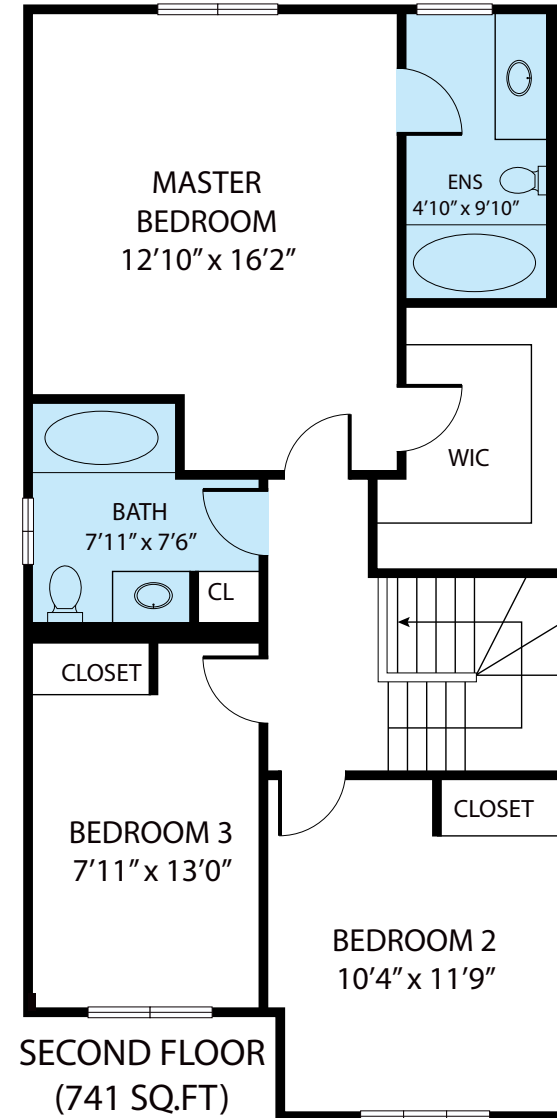


BASEMENT
(602 SQ.FT)



FIRST FLOOR
(544 SQ.FT)



SECOND FLOOR
(741 SQ.FT)

4802 Dovehouse Drive, Mississauga, ON L5M 7K6, Canada
TOTAL APPROX. FLOOR AREA 1,887 SQ.FT

Whilst every attempt has been made to ensure the accuracy of the floor plan contained here, measurements of doors, windows, rooms and any other items are approximate and no responsibility is taken for any error, omission, or misstatement. This plan is for illustrative purposes only and should be used as such by any prospective purchaser.

